

A young man with a dark backpack is walking away from the camera on a city sidewalk. The background shows a busy street with buildings, traffic lights, and other pedestrians. The scene is slightly blurred, suggesting movement. The overall color palette is muted, with a mix of greys, blues, and reds.

UNPAD GLOBAL OUTREACH AND EXPOSURE (U-GLOBE)

STUDENT LIFE IN INDONESIA

Student accommodation, cost of living, leisure, etc.



Overview

- Our Campus
- Student accommodation in Indonesia
- Everyday life in Indonesia

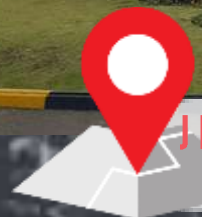
Our Campus

Location

Unpad Dipati Ukur, Bandung



UNIVERSITAS PADJADJARAN
KAMPUS IWA KOESOEMASOEMAHAN



Jl. Dipati Ukur No.35, Lebakgede, Kecamatan
Coblong, Kota Bandung, Jawa Barat 40132

Unpad Jatinangor, Sumedang



Jl. Raya Jatinangor, Cikeruh, Jatinangor,
Kabupaten Sumedang, Jawa Barat 45363

33 minutes (21,0 km)

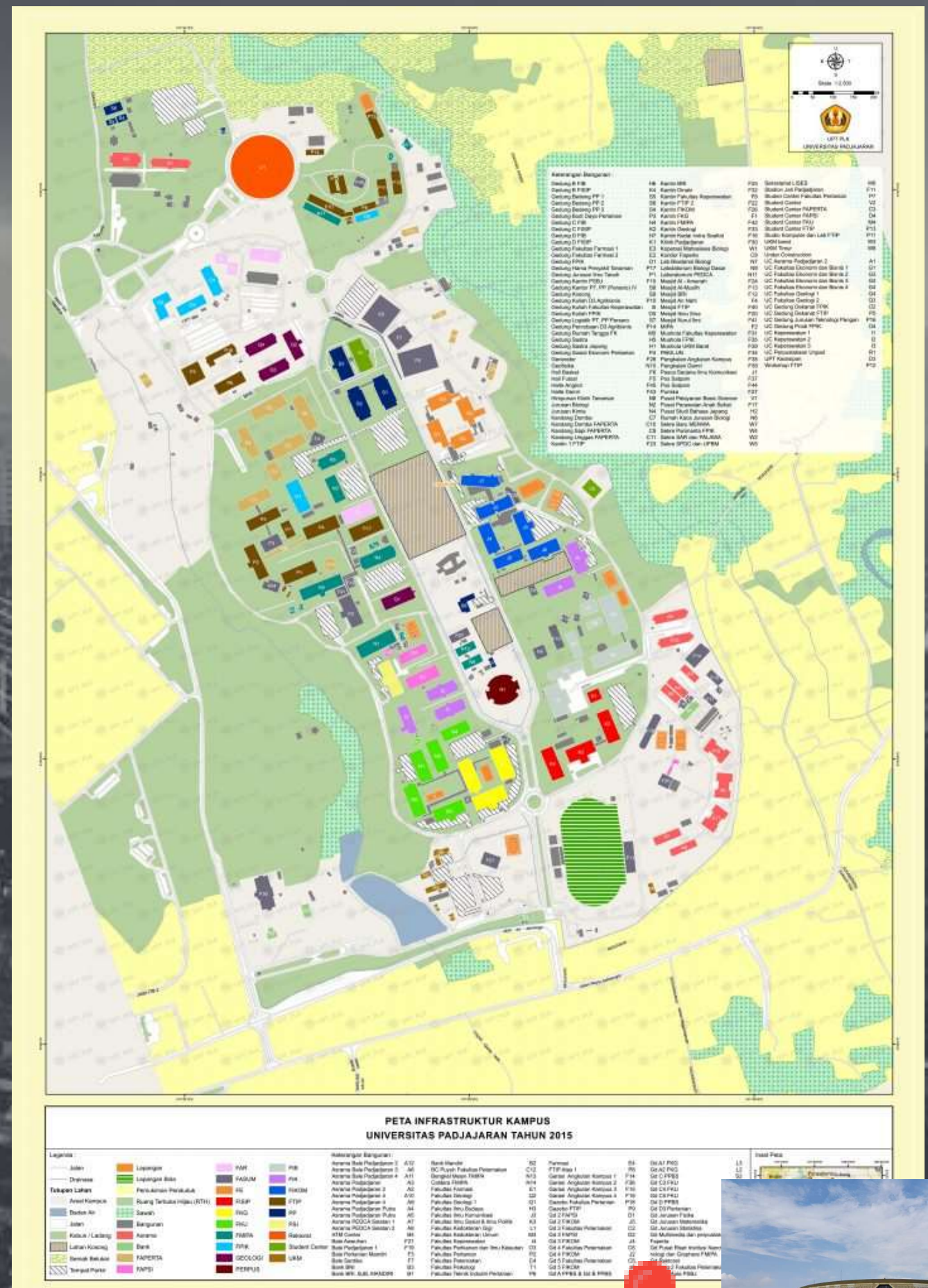
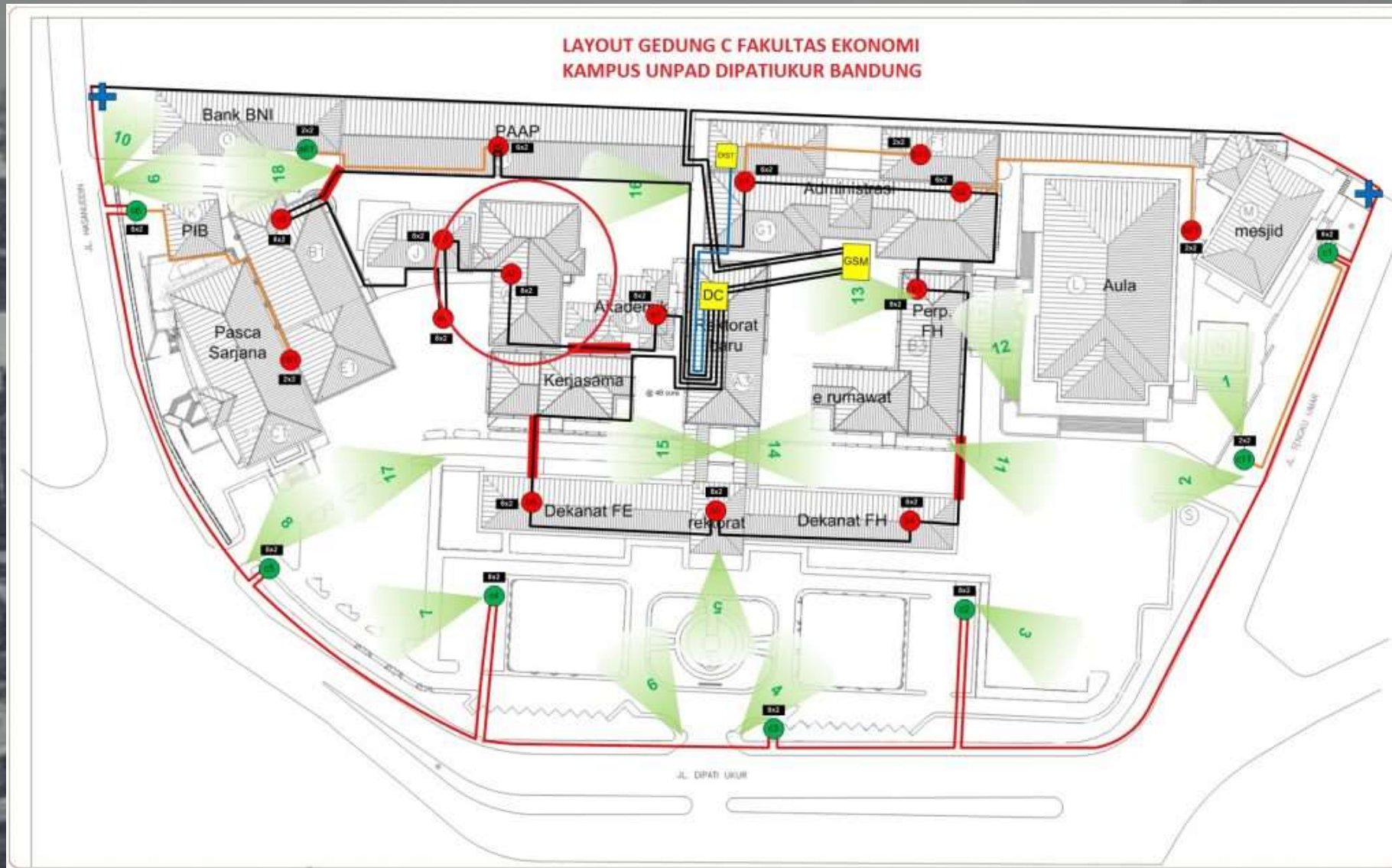


via Jl. A.H. Nasution and
Jl. Bandung - Palimanan
/Jl. Raya Cirebon - Bandung

Most undergraduate schools are located in the Jatinangor Campus, Sumedang Regency while the Dipati Ukur Campus, Bandung, is mostly dedicated for postgraduate programs.



Unpad Dipatiukur Map

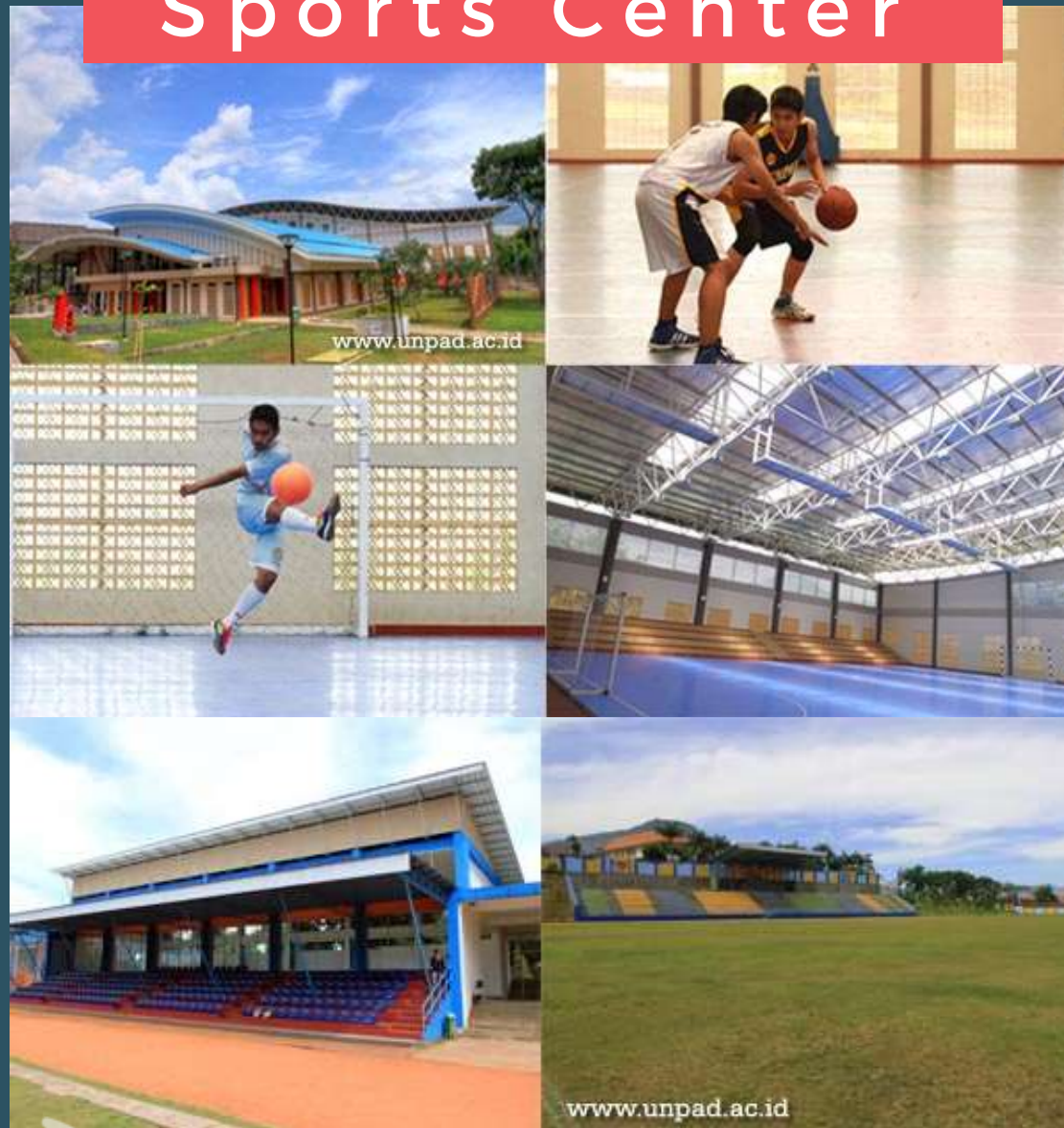


Unpad Jatininggor Map

Campus Map

Campus Facilities

Sports Center



Unpad provides indoor and outdoor sports center that is divided by the types of sports. The indoor sports center, Bale Santika, provides futsal, basketball, volleyball, and badminton fields.

Jalatista



There are ready-to-drink water taps called "Jalatista" in a number of locations on the Jatinangor Unpad campus to facilitate the academic community of Padjadjaran University in accessing free and healthy drinking water as Unpad's efforts to protect the environment.

Student Center



Students center is a place to study, gather to have discussions, or merely just a place for students to wait before the next study hour. Each faculty usually has its own student center that provides comfortable space with an internet hotspot facility.

Campus Facilities

Health Center



Poliklinik Padjajaran offers services that are available for all staff members and students. The services include general check-up, 24-hour Emergency Room, dentist, pharmacy, and others. Through those facilities, they can facilitate the staff member's and students' health care needs.

Unpad's biggest library, Kandaga, provides a wide range of general literary collections that can help academics and students to gather all the information they need.

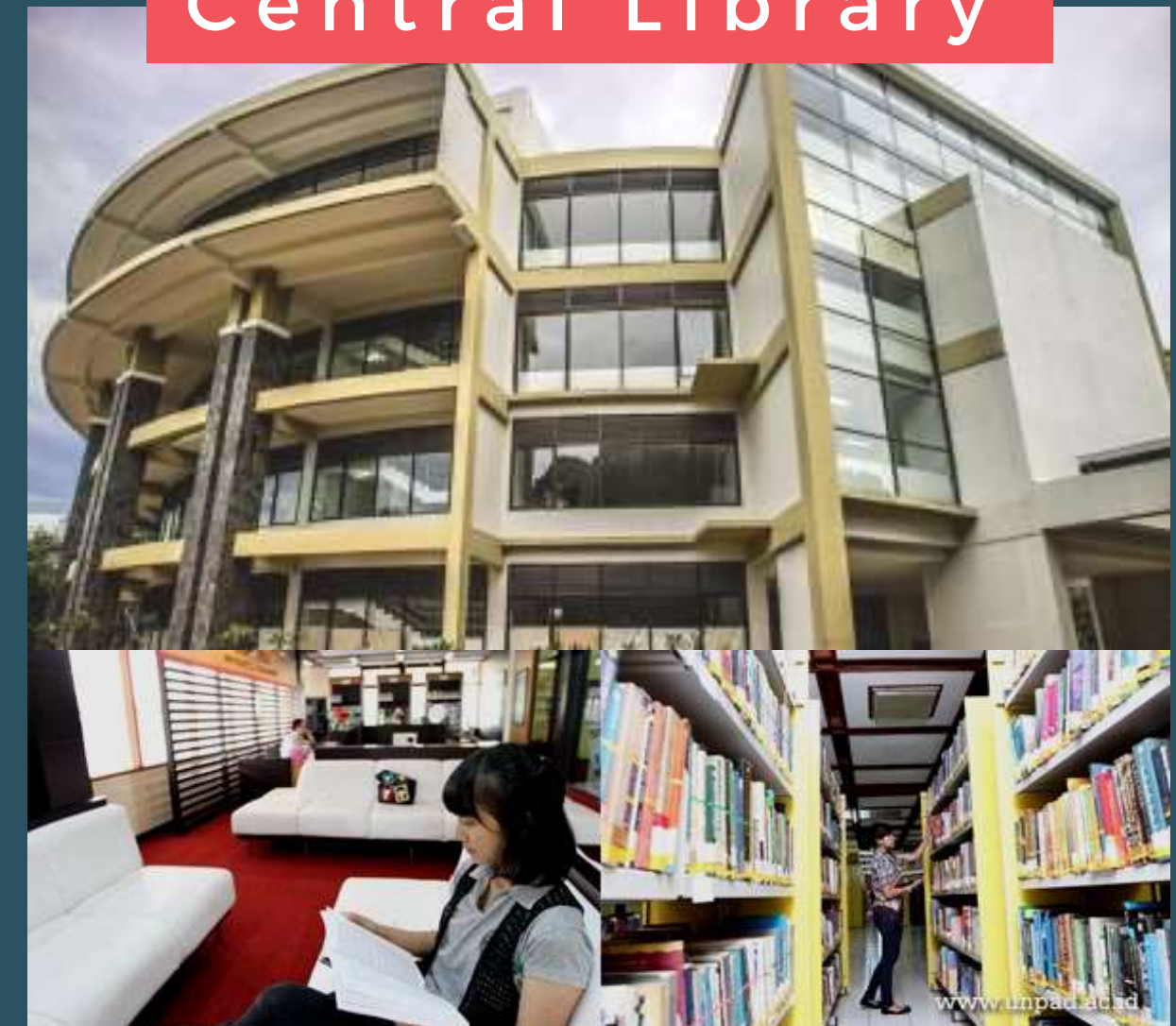
The facilities provided by Kandaga are:

- Internet service (Student Internet)
- Digital Library (catalog search)
- Online journal search (ProQuest Service)

List of journals accessible to students:

- E-Journal PROQUEST
- E-Journal Cengage Learning
- E-Journal EBSCO HOST

Central Library





STUDENT ACCOMODATION Dormitory

Bandung

Close to Unpad Dipatiukur Campus

Kost - an



Price Range:
Rp400,000-Rp4,000,000/month.



Kost - an



Jatinangor



Asrama Padjajaran

Price Range:
Rp6,000,000-12,500,000/year.



Kost - an



Price Range:
Rp250,000-Rp2,500,000/month.

Online Transportation

Online transportations (such as gojek and grab) is the most comfortable and easiest transportation to use in Bandung, Jatinangor, and other cities in Indonesia. They are a social enterprise that partners with ojek drivers to deliver a one-stop-shop convenience service for Indonesians. Transport is the main service is, but there are other services like instant Courier, food delivery, etc. You can order a online ojek driver for any of their services, from their mobile app.



STUDENT
ACCOMODATION
Transportation



"Bike Sharing" have 5 bicycle 'shelters' throughout the city, one of them is located in Jalan Ir. H. Juanda (Dago). They operate from 8 a.m to 4 p.m daily and charge Rp1,000 for the first hour and Rp2,000 for every following hour.

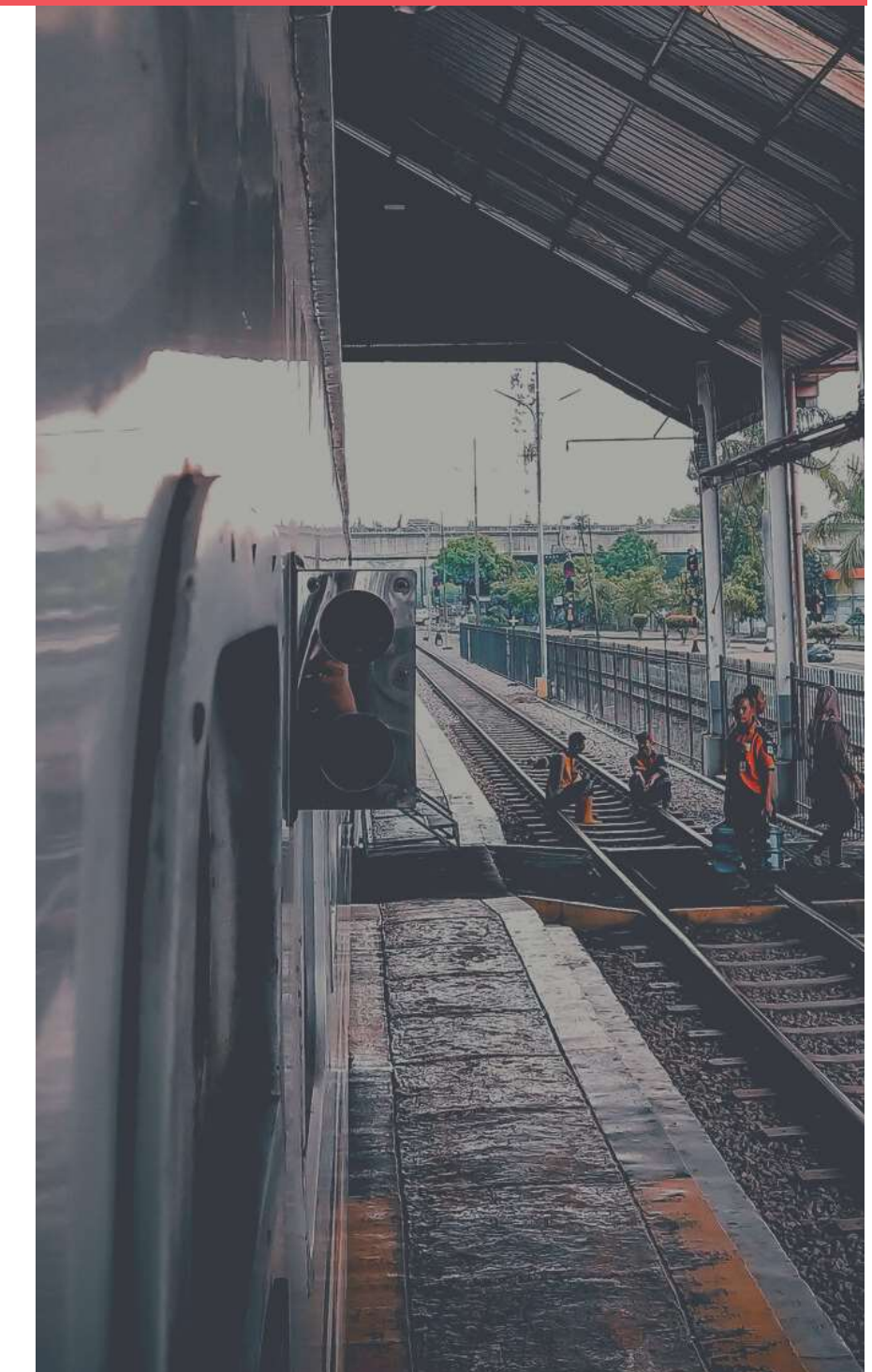
Buses in the city of Bandung consist of Trans Metro Bandung (TMB) and DAMRI. All are large buses equipped with air conditioning, starting from Rp5,000.



Angkot (Angkutan Kota) is a small public minivans that has many colours depending on its destination. Their fares depend on your travelling distance. A short distance of about 1-2 KM will cost Rp.2,000, while a longer distance will normally be around Rp. 4,000.



Shuttle buses (point to point) can be used to travel from Bandung to surrounding areas such as Jatinangor, Soreang, Sumedang, etc (starting from IDR 15,000). Or to several cities such as Jakarta, Tasikmalaya, etc.



Jatinangor

Public

You can take an Angkot with a price ranging from Rp2,000 to Rp5,000 to go anywhere in the city. The brown Angkot runs from the Cileunyi toll gate to Sumedang. You can find this type of Angkot near Gerbang Lama Unpad. There is also the green-with-orange-stripe Angkot that takes you from Gerbang Lama Unpad to Jalan Sayang.

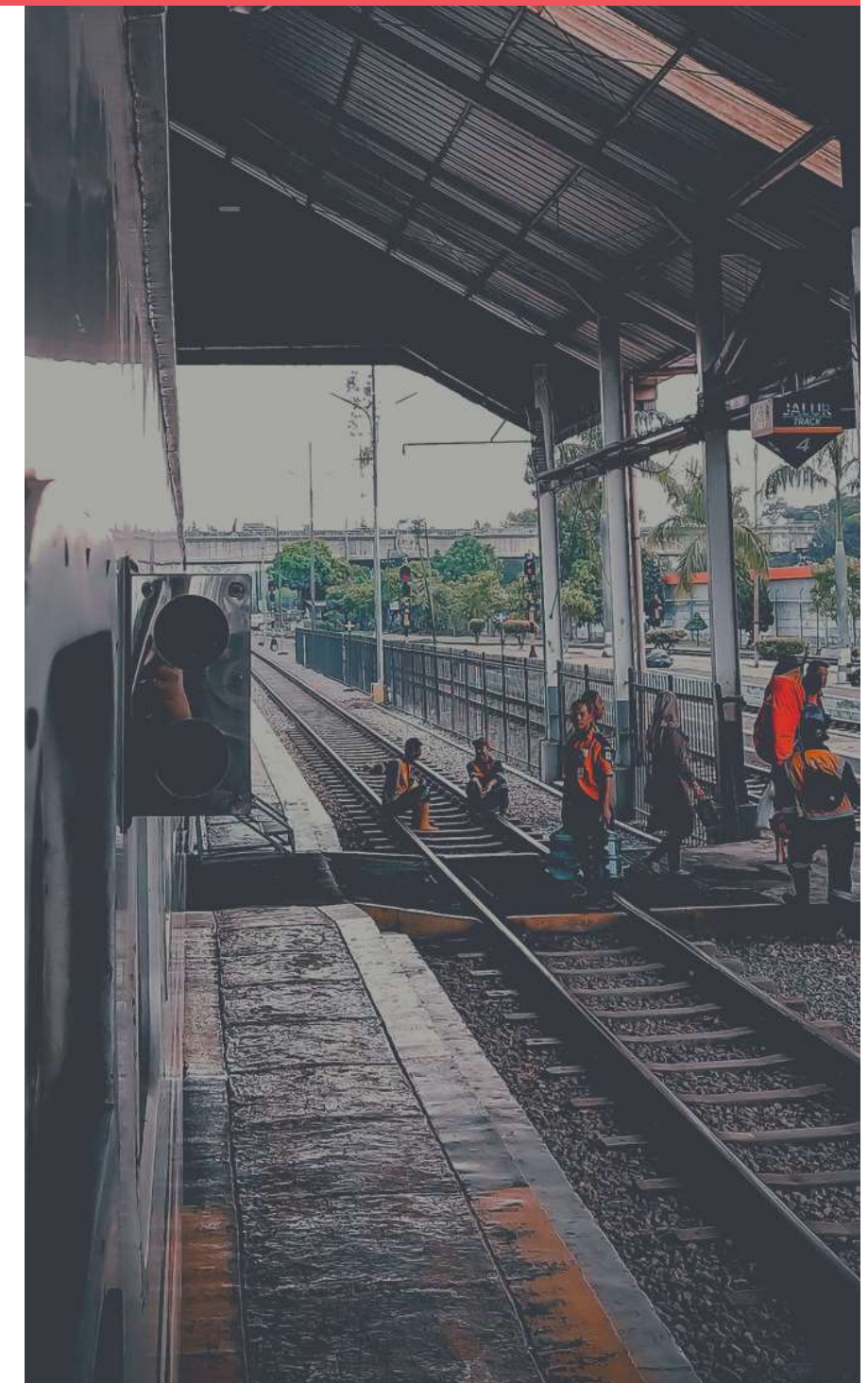
You can also take a bus to Bandung called Damri. The university also provides separate transportations called Damri Unpad for its students who want to go to Bandung. Universitas Padjadjaran students, lecturers, and staff can ride this bus for free. Their operational hours are every 6.00 a.m and 5.00 p.m.



In Campus

Unpad offers a free campus transportation called odong-odong to help students and academics to get around Unpad. Odong-odong operates from 07.00 a.m to 04.00 p.m WIB. Currently unpad has 10 units of Odong-odong, so students do not need to worry about getting to their desired destination within Unpad Jatinangor Campus.

STUDENT
ACCOMODATION
Transportation



STUDENT
ACCOMODATION
Food Budget

There are so many different options of food with varying price range that you can choose, but these are the average expense that students usually spend for food on the daily:

Bandung

Rp10,000-Rp50,000/ meal.

Jatinangor

Rp6,000-Rp30,000/ meal.





EVERY DAY LIFE AS A STUDENT IN INDONESIA

What can I do?

STUDENT ACTIVITIES

Student Activity units

Student Community

STUDENT ACTIVITY UNITS

Lises Unpad (Lingkungan Seni Sunda)

Engaged in the field of Sundanese culture, activities are carried out to maintain the traditions of Sunda, West Java. The activities are cultural expeditions, art performances such as traditional sundanese dance, traditional singing, mask performance, theater and others.

Instagram : @lises_unpad

Website: lises.unpad.ac.id

English Speaking Union (ESU Unpad)

Student association for English speaking activities. ESU activities are unit introduction, debating practice, strategic meetings, internal competition, and sending teams to championship

Instagram : @ESU_unpad



STUDENT ACTIVITY UNITS

Association Internationale des Etudiants en Sciences Economiques et Commerciales (AIESEC)

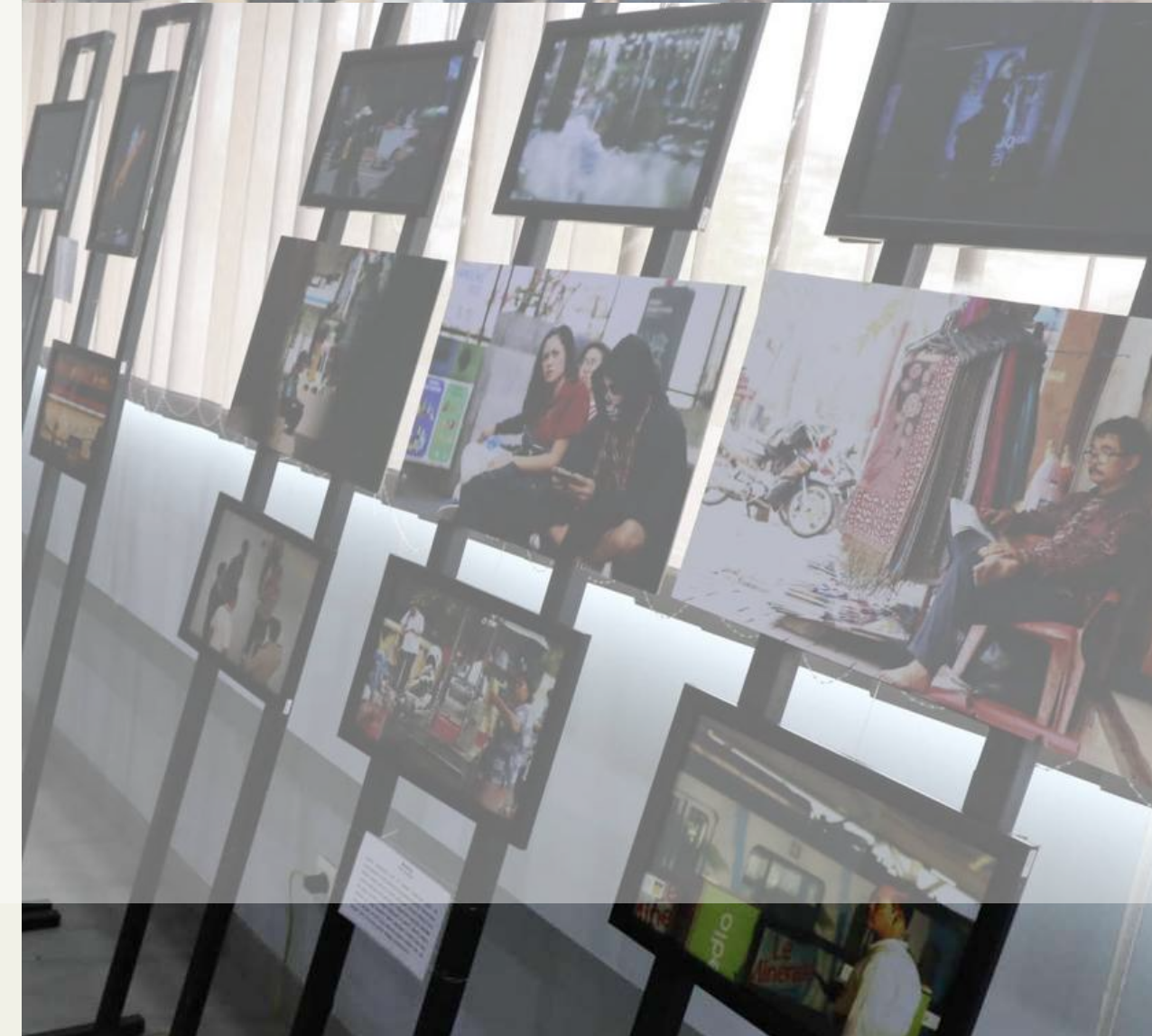
Youth organization focused on developing the leadership potential of youth. AIESEC holds many international social projects to support the sustainable development programs (SDGs) formulated by the United Nations (UN).

Instagram : @aiesec.unpad

SPEKTRUM

Organization unit for photographs. learn various types of photo techniques, ranging from techniques for photo documentation of events such as weddings, seminars, events, to product photos and many more

Instagram : @Spektrum.unpad



STUDENT COMMUNITIES

GIRL UP UNPAD

Girl Up Unpad is a space for empowerment in creating sustainable gender equality especially in Unpad. The activities are to supporting each other, advancing girls skills, raising awareness, fighting for our rights, and increase girls' opportunities in various places and levels.

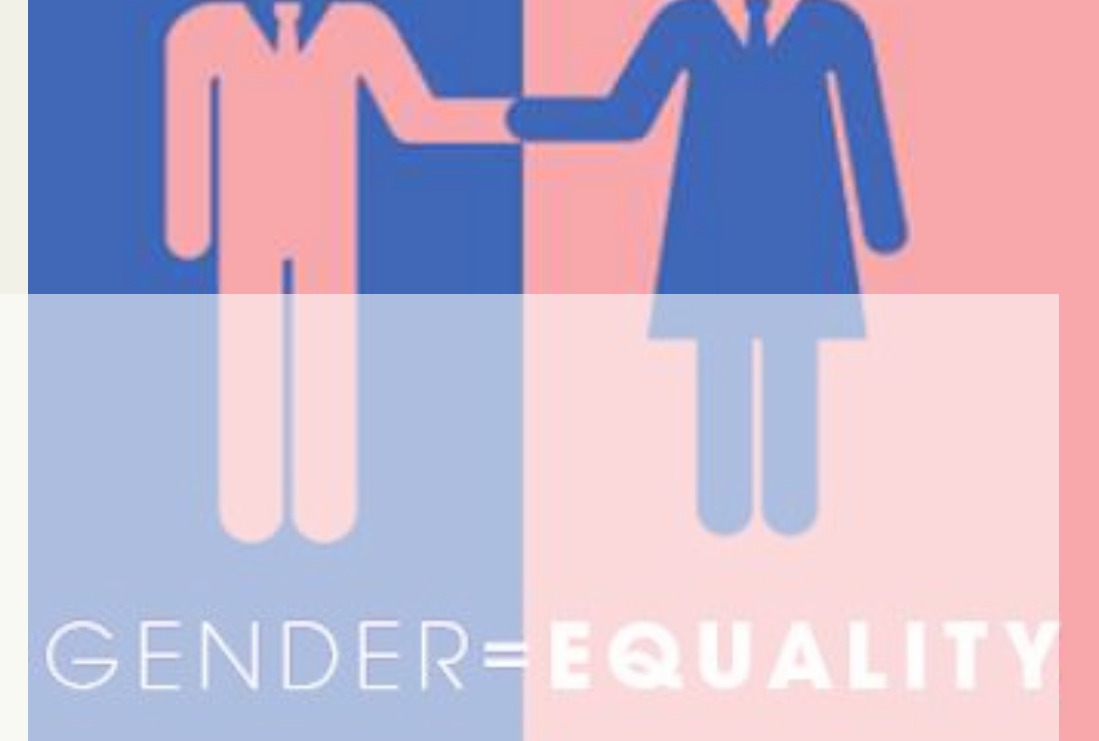
Instagram : @girlup.unpad

WARTA KEMA UNPAD

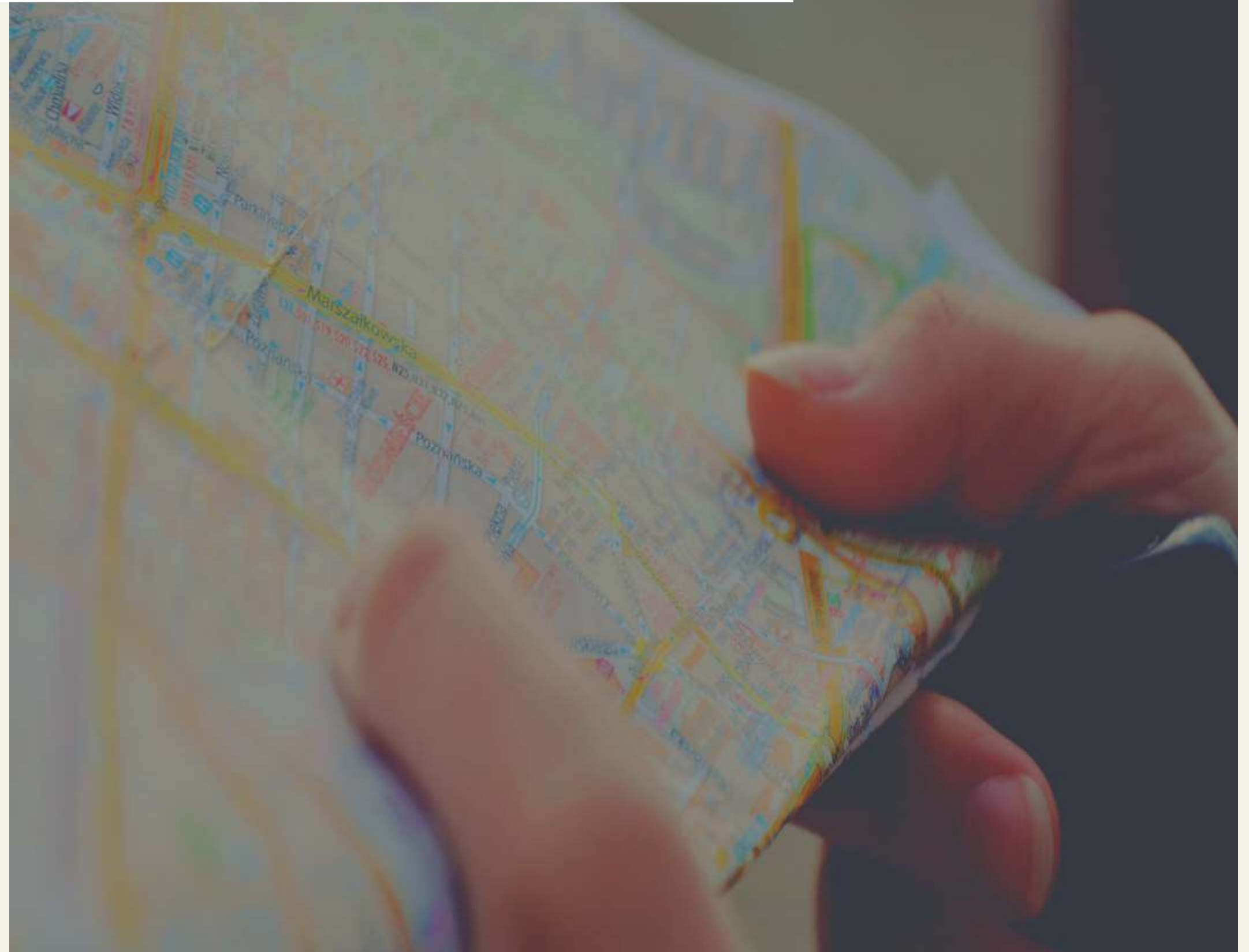
Warta Kema Unpad is campus press for Padjadjaran Univeristy, the forefront of providing information related to campus policies, student movements, student activities, and the latest news about student life. Warta kema aims to facilitate aspirations, opinions, and develop Kema Unpad's interests and talents in writing.

Instagram : @wartakema

Website : www.wartakema.com



Leisure in Bandung, West Java



MUSEUM



**MUSEUM KONFERENSI ASIA
AFRIKA**

Braga, Lengkong, Bandung (FREE Entry)



MUSEUM KOTA BANDUNG

Jalan Aceh kota Bandung (FREE Entry)



MUSEUM GEDUNG SATE

Citarum, Kec. Bandung Wetan (Rp5.000)



MUSEUM SRIBADUGA

Pelindung Hewan, Astanaanyar (Rp3.000)

PLACE FOR LEISURE



**TAMAN HUTAN RAYA
BANDUNG**

Jl. Ir. H. Juanda, Kompleks tahura (Rp55.000)



DAGO PAKAR

Dago, Kec. Coblong (Rp12.000)

form of a forest offers a very beautiful natural view in the middle of a shady and dense pine forest

Enjoy the view of the forest and the lights from the top of the cliff



TEBING KERATON

Lembang, Ciburial (Rp15.000)



DUSUN BAMBU

Lembang, Kertawangsi (Rp100.000 - Rp150.000)

TOURISM



25 kilometers north of Bandung direction of Lembang.



Kawah Putih, The White Crater is a lake on the mountain. Kawah Putih can easily be reached by car all the way to the rim and then it is a 100 metre walk to the lake itself. It is a very nice colorful lake.

. The streams and pools are fed by warm mineral springs, which are created by the heat from nearby volcanoes



About 30 minutes from Tangkuban Perahu crater



Batukaras and Nusawiru Airport (31 km south of Pangandaran).

CAFE NEAR CAMPUS



DIDAGO CAFE

Jl. Ir. H. Juanda, Dago Bawah

Serve various drinks (coffee, non-coffee, and Didago drink signature)

Range : Rp25 k - Rp80k



Kinokimi

Jl. Ranggamalela, Dago Bawah

Various coffee from kinokimi signature

Range : Rp22k - Rp38k



SMASH AND SHAKE

Jl. Sulanjana, Dago Bawah

Various signature milkshake and cookies with cozy place

Range : Rp25k - Rp40k

CAFE



BRAGA PERMAI

The infamous of the oldest restaurant in Bandung, located on Braga Street.

Range : Rp100k - Rp200k



THE VALLEY BISTRO

Jl. Lembah Pakar Timur, Dago Atas -
With warm atmosphere accompanied
by delicious food, drink, and
beverages

Range : Rp50k - Rp100k



CAFE D'PAKAR

Jl. Sekejolang, Dago Atas -
Serving tradional sundanese food
while enjoying nature as the view of
reastaurant

Range : 15k - 45k

CAFE TO ENJOY NATURE



RUMAH MIRING

Jl. Dago Giri, Lembang –
Acclaimed as one of the best bars at Dago Hill, where you can enjoy your food and drinks while overlooking of the famous Bandung city view.

Range : Rp50 k – Rp100k



Kopi Selasar

Jl. Bukit Pakar Timur, Dago Atas
The cafe area is just as artsy as the rest of this complex, and even more, if you would consider good coffee as an art.

Range : Rp30k-60k



KOPI IRENG

Jl. Bukit Pakar Timur, Dago Atas
The cafe is constructed relatively high up, you'll be able to get a bird's eye view of the city while sipping your warm coffee.

Range : Rp30k – Rp100k

SHOPPING IN BANDUNG



23 PASKAL

filled with well-known retailers, hotels and food courts. Its location near a train station makes it an easy place to visit. The mall provides lots of entertainment. A place where you can shop local and international products.



Paris Van Java

Has a unique concept with an open-air resort layout. Walk down Via Latina and enjoy strolling next to white doves from Holland. Located in the heart of Bandung's most upscale region, Paris Van Java is situated in the Sukajadi area.



CIHAMPELAS WALK

Been famous as a tourist destination both locally and overseas. From Cihampelas Walk, the frenzied atmosphere of the mingled Cihampelas road between rows of shops and vehicle traffic, would not be felt.

SHOPPING IN BANDUNG



Bandung Indah Plaza

Located on Jalan Merdeka which is the main road in Bandung. Occupied intensely by commercial developments, including retail, hotels, and office developments.



Bandung Trade Center

a fashion shopping object that provides its customers with the latest fashion trend.



Trans Studio Mall

Merged with a theme park called Trans Studio Bandung. The indoor park contains lots of rides such as rollercoaster, haunted house, vertigo, and many others.



Thank You

For more information about unpad and student life

Unpad Website:

<https://www.unpad.ac.id/en>

International Office Unpad Website:

<https://international.unpad.ac.id/>

International Office - Universitas Padjadjaran's Global Relation and Advancements

Rectorate Bulding, 1st Floor

Jalan Raya Bandung-Sumedang Km. 21 Jatinangor

45363 Indonesia

Phone: +62 22 842 888 46

Fax.: +62 22 842 888 94

e-mail: international@unpad.ac.id